

HIO i.MX6 STARTER KIT QUICK SETUP GUIDE

1. PACKING LIST

Description	Qty
HIO-EMB-1200 Core-Board	1
HIO-IOB-1240 IO Module	1
5V DC Power Adapter	1
Dual Port USB Cable	1

Safety Warning

The use and installation of this system should only be performed by professionals. Improper installation of any electronic device or electrical component can result in serious injury or death. Please make sure that all safety precautions are taken into account.

Static-Sensitive Devices

Electrostatic-Discharge (ESD) can damage electronic components. To avoid damaging your system board, it is important to handle it very carefully. The following measures are generally sufficient to protect your equipment from ESD.

Precautions

- Use a grounded wrist strap designed to prevent static discharge.
- Touch a grounded metal object before removing the board from the antistatic bag.
- Handle the board by its edges only; do not touch its components, peripheral chips, memory modules or gold contacts.
- When handling chips or modules, avoid touching their pins.

Put the motherboard and peripherals back into their antistatic bags when not in use.

2. HIO I.MX6 STARTER KIT LAYOUT

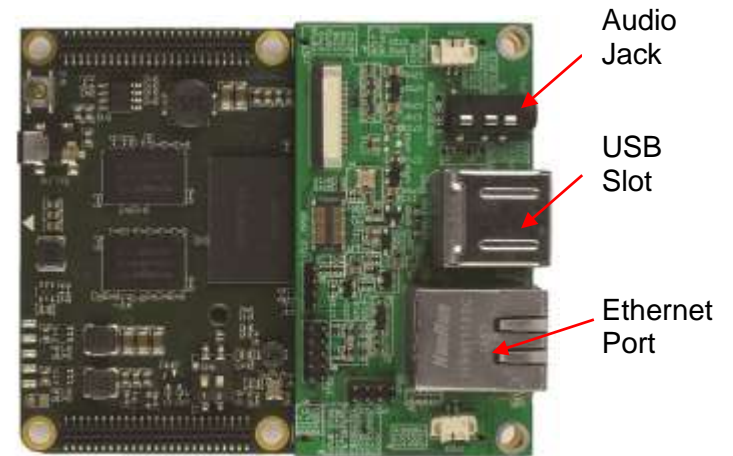


Figure 2a: iMX6_StarterKit

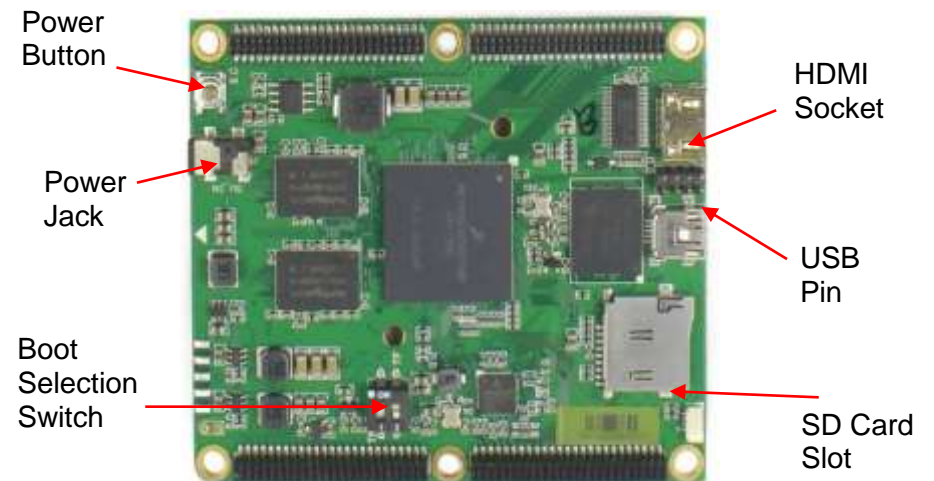


Figure 2b: HIO-EMB-1200 Core Board

HIO i.MX6 STARTER KIT QUICK SETUP GUIDE

3. GET STARTED

A. Unpack

The HIO-EMB-1200 is shipped in antistatic package to avoid static damage. When unpacking the board, make sure that you are static protected.

B. Boot Selection for HIO-EMB-1200 Core Board

Each HIO-EMB-1200 board has default Yocto Project Embedded Linux loaded into its iNAND.

a. To boot from iNAND: switch to Number 1 On

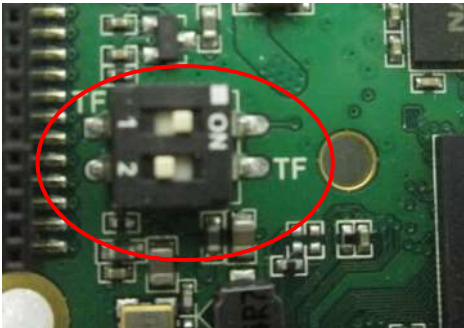


Figure 3a

b. To boot from SD Card: Plug SD Card into SD Card Slot

- Switch to Number 2 On
- The machine variable of HIO-EMB-1200 is **hio-imx6dl-board**
- To build image for HIO-EMB-1200, please visit wiki.hiopproject.org

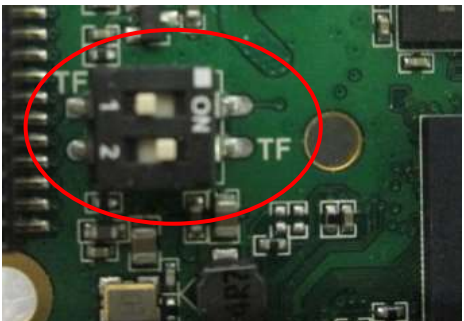


Figure 3b

C. Plug-in

After adjusting the booting selection switch, plug in the following components.

- Mini-HDMI cable to the board and HDMI to monitor
- USB Keyboard/Mouse
- Power supply

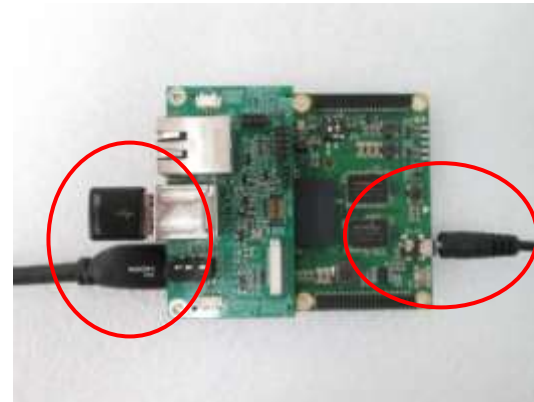


Figure 3c

The machine should boot up after plug-in power supply. If not, press the power button to power on.

Later, the display screen should show the following command prompt
Input **root** as login name and press **Enter**

```
hio-imx6dl-board login:root
```

```
root@hio-board-dl:~# _
```

Congratulations, you have logged in to the HIO-EMB-1200 board. Have fun!

For more information about HIO Project, please visit wiki.hiopproject.org